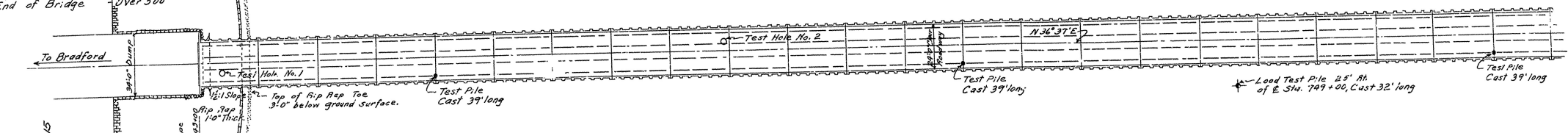


State Job No. 1159

NRH 1976 1985 27 85  
 (Planning Proj) 27 85

From Sta.	To Sta.	At of E.	Lt of E.	Total Width
664+00	760+00	100'	300'	400'

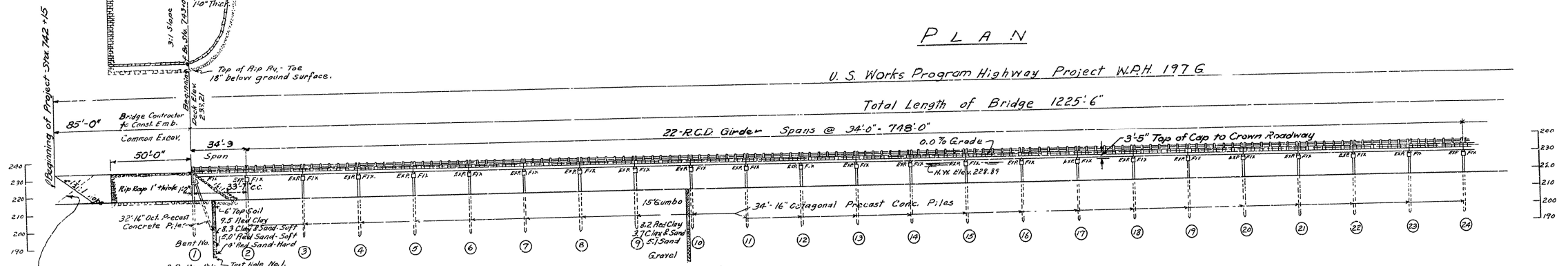
TANGENT DISTANCE DATA  
 From Beginning of Bridge Over 500'  
 From End of Bridge Over 500'



# PLAN

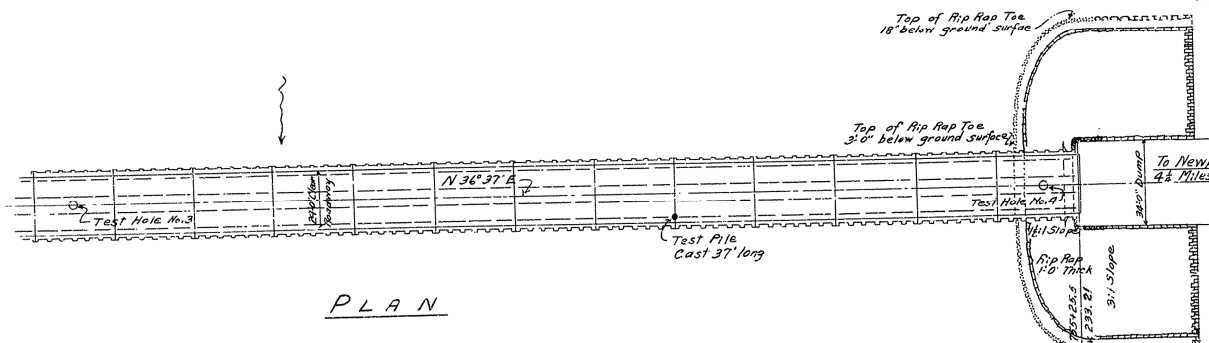
U. S. Works Program Highway Project W.P.H. 1976

Total Length of Bridge 1225'-6"



# ELEVATION

For General Notes see Layout of Bridge 1879

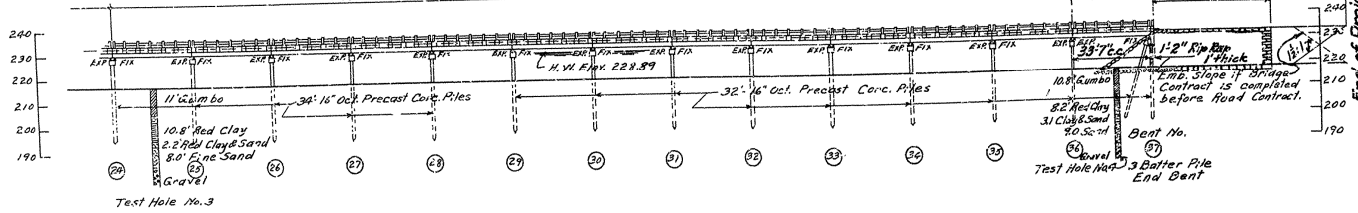


# PLAN

U. S. Works Program Highway Project W. P. H. 1976

Total Length of Bridge 1225'-6"

12 R.C.D. Girder Spans @ 34'-0" - 408'-0"

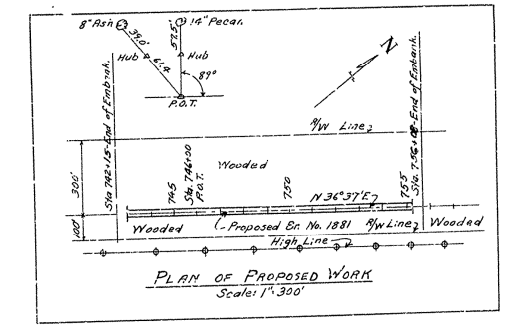


# ELEVATION

B.M. Elev 218.80  
 Nail in gas line pole  
 200' N. Sta. 741+00.

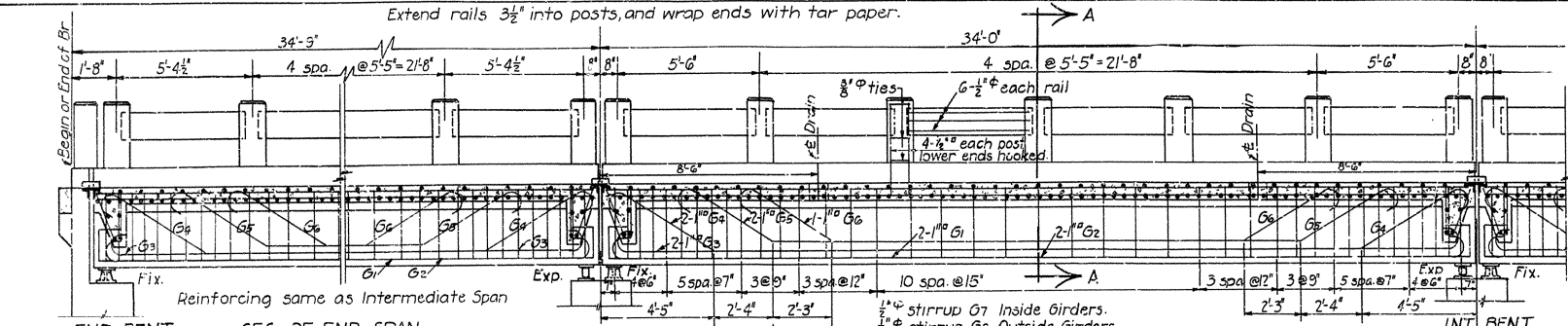
Maximum Pile Load - 28 Tons per Pile.

Item No.	Item	Quantity	Unit
11	Clearing	12.9	Acres
11	Grubbing	12.9	"
12	Common Excavation	8,110	Cu.Yds.
13	Dry Excav. for Structures	90	"
14	Class "A" Conc. (Proj. Markers)	0.26	"
55	Reinf. Steel ( " " )	30	Lbs.
91	Class "S" Conc. for Bridges	1535.4	Cu.Yds.
92	Reinf. Steel for Bridges	402515	Lbs.
93	Concrete Piling	6370	Lin. Ft.
93	Loading Test Pile	1	Each
94	Concrete Railing for Bridge	2464	Lin. Ft.
95	Rip Rap	700	Cu.Yds.
5-P	Bronze State Br. Name Pls.	2	Each
5-P	Bronze Project Marker Pls.	2	Each
96 & 5-P	Metal Bearing & Roadway Expansion Devices	64680	Lbs

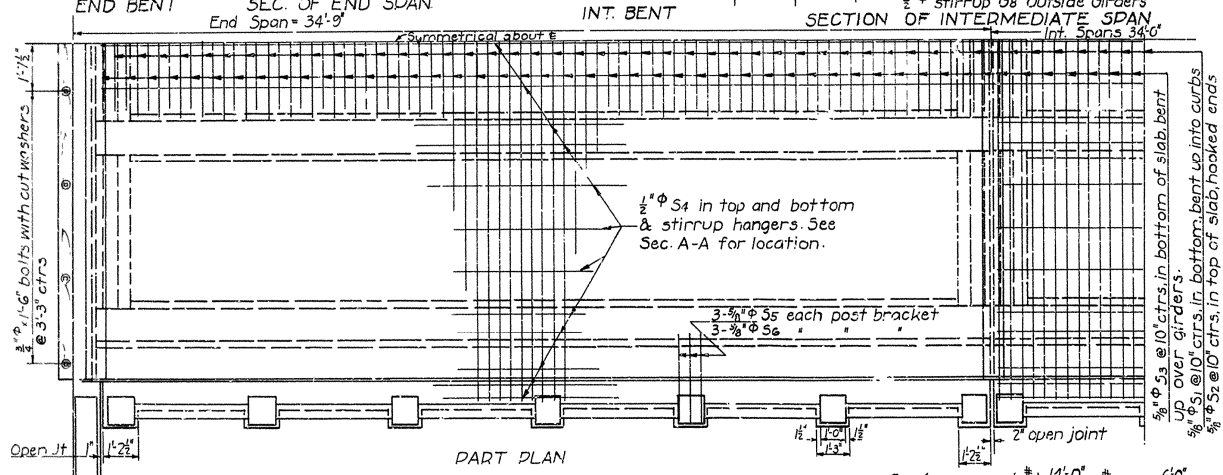
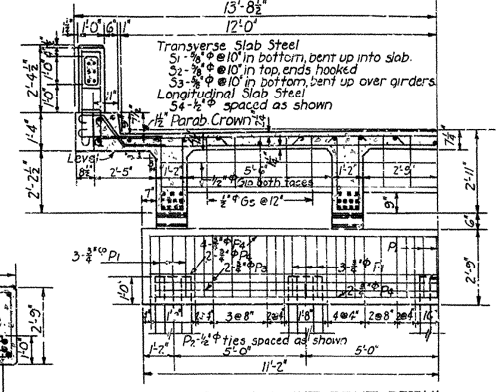


LAYOUT OF  
 WHITE RIVER VALLEY RELIEF BRIDGE No. 1881  
 BRADFORD-NEWPORT ROAD  
 JACKSON Co.  
 ROUTE 67 SECTION 16  
 ARKANSAS STATE HIGHWAY COMMISSION  
 LITTLE ROCK-ARK.  
 Drawn by: H.D. Date 5-1-35  
 Traced by: E.G. Date 5-15-35  
 Checked by: R.D. Date 8-8-35  
 BRIDGE No. 1881  
 Scale 1" = 30'-0"  
 DRWG. No. 3995

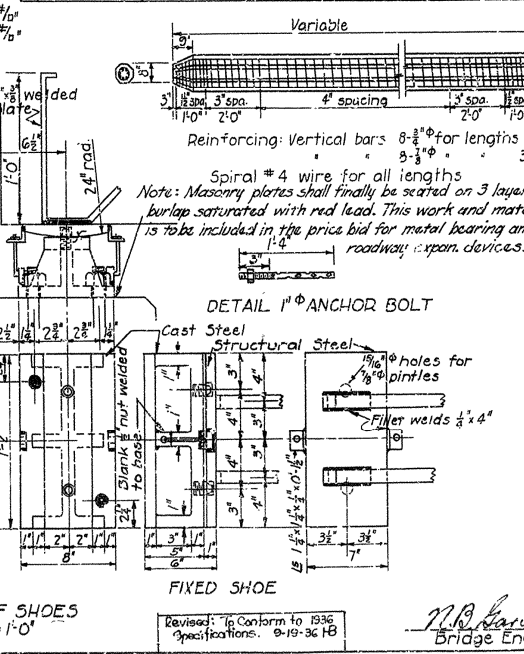
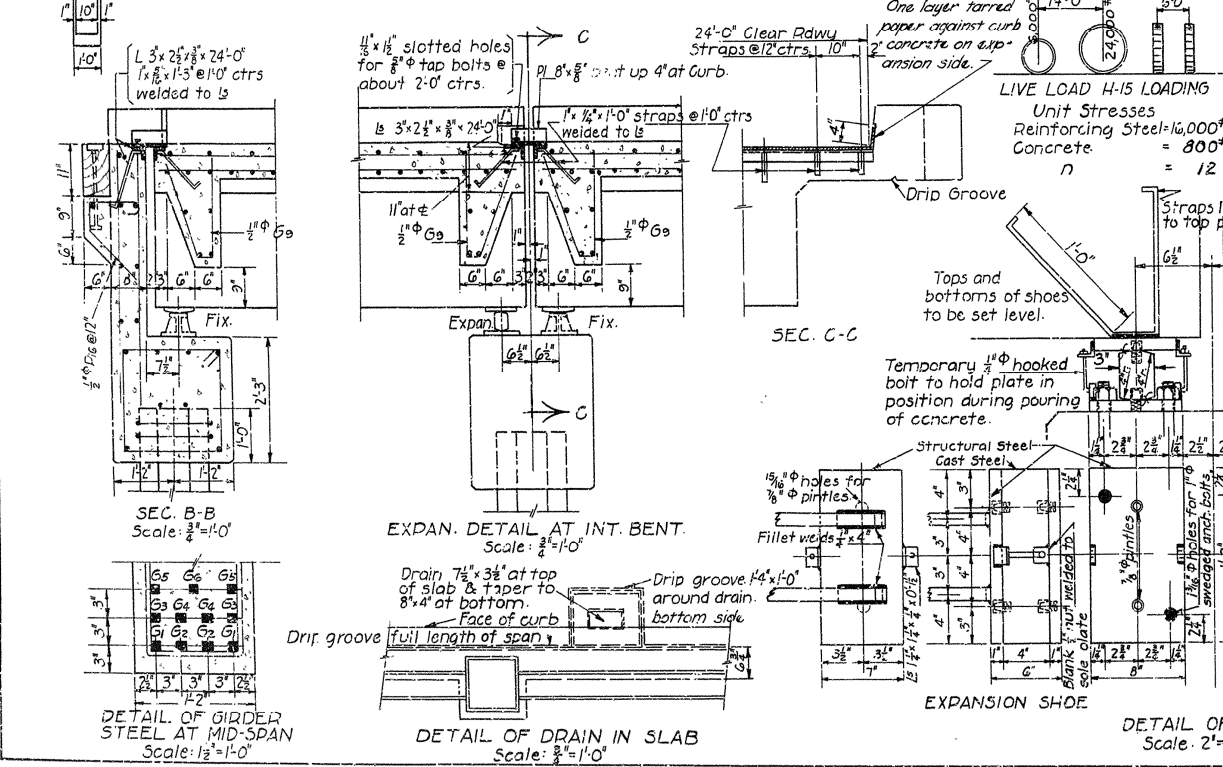
Bridge Engineer



RAIL SECTION Scale: 1/2"=1'-0"



BAR LIST		
Mark	Size	Length
S1	5/8"	27'-5"
S2	do	26'-4"
S3	do	27'-1"
S4	1/2"	33'-4"
S5	3/8"	3'-6"
S6	3/8"	33'-4"
G1	1"	37'-2"
G2	do	35'-0"
G3	do	34'-8"
G4	do	36'-0"
G5	do	30'-4"
G6	1"	25'-10"
G7	1/2"	6'-7"
G8	do	6'-5"
G9	do	3'-10"
G10	1/2"	20'-9"
P1	3/4"	8'-7"
P2	1/2"	9'-2"
P3	3/4"	47'-3"
P4	1/2"	8'-7"
P5	3/4"	5'-7"
P6	1/2"	8'-4"
P7	1/2"	21'-11"
P8	1/2"	21'-11"



General Notes  
All exposed corners to have 3/4" chamfers unless otherwise noted.  
All concrete to be Class 'S'.  
Reinforcing steel to be deformed bars of structural or intermediate grade. Shop lists and bending diagrams must be submitted by the Contractor and approval secured before fabrication is begun.  
Oak headers to be included in volume of Class 'S' Concrete.  
Oak header bolts to be paid for at the unit price bid for reinforcing steel.  
Expansion devices and shoes are to be paid for at the unit price bid for metal bearing & roadway expansion devices, unless field paint: All exposed parts of structural steel shall be given one priming coat of red lead and raw linseed oil. First top coat shall be white lead tinted with lamp black. Second top coat shall be aluminum paint.  
Concrete piling to be Class 'S', and to have a minimum capacity of 30 tons each.  
Specifications: Arkansas State Highway Commission, Standard Specifications for Road and Bridge Construction, adopted June 30, 1936.

DETAILS OF  
STANDARD 34'-0" R.C. DECK GIRDER  
AND CONCRETE PILE BENTS  
4 GIRDER TYPE, 4-5 PILE BENTS  
24'-0" CLEAR ROADWAY  
ARKANSAS STATE HIGHWAY COMMISSION  
LITTLE ROCK, ARK.  
Drawn by: W.C.H. Date: 7-26-35  
Traced by: A Date: 8-13-35 Scale: 3/8"=1'-0" (except as noted)  
Checked by: Date: \_\_\_\_\_  
BRIDGE NO. 10341-1 DRWG NO. 2330  
W.B. Farmer  
Bridge Engineer